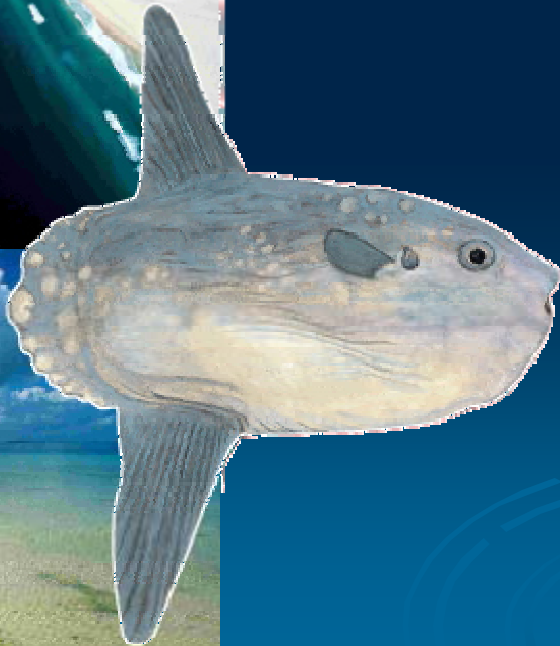
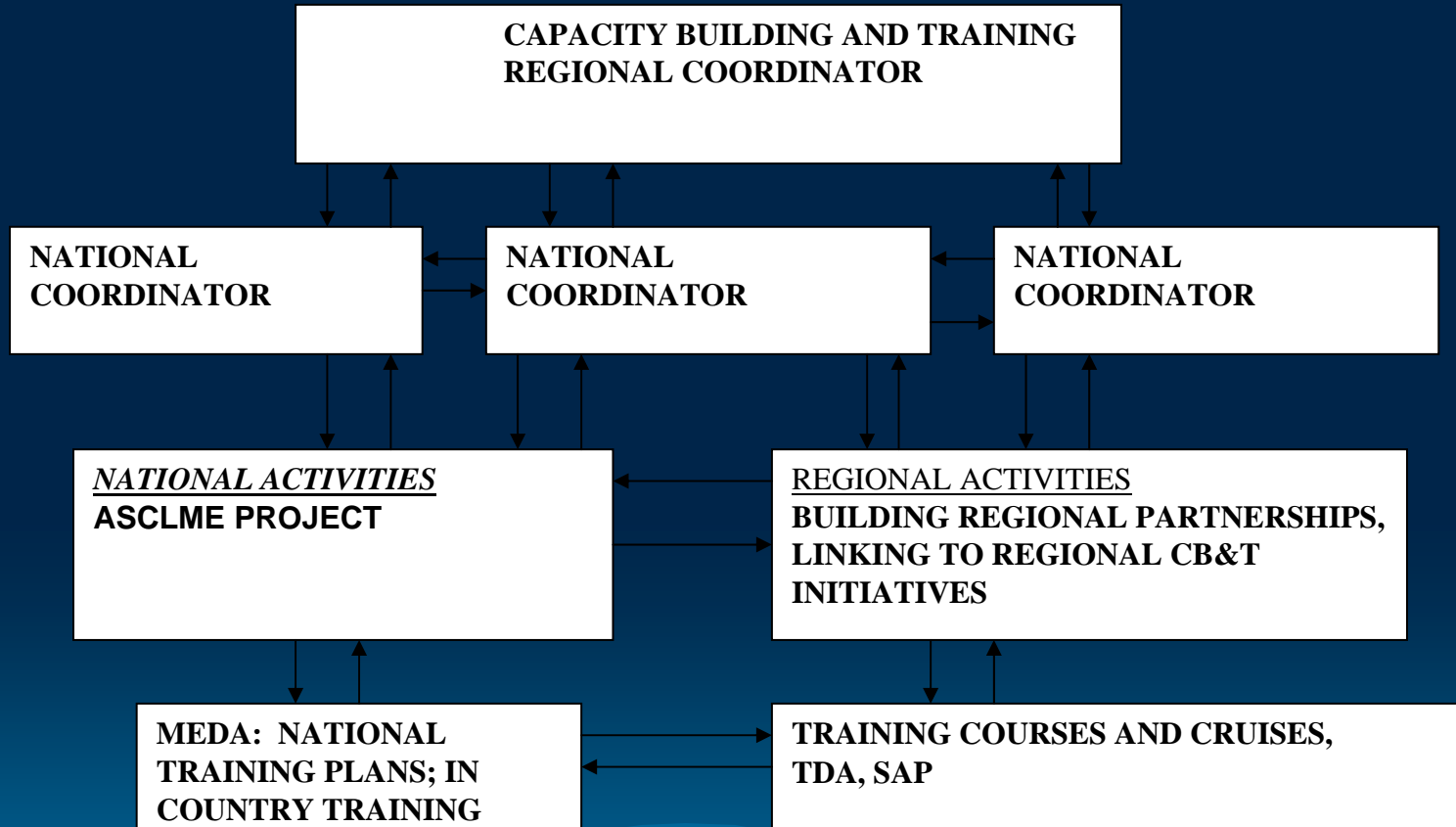


CAPACITY BUILDING AND TRAINING



- National Capacity Building and Training Coordinators appointed
- A framework of activities was developed at the Regional Meeting of ASCLME Technical Coordination Groups (COGs), and the Regional Forum of Western Indian Ocean Projects



CB&T Contribution to the MEDAs, TDA and SAP:

- National Training Plans suggested as the appropriate mechanism to provide input into the MEDA, TDA and SAP.
- Draft Outline was discussed in Mauritius, amended, and circulated to regional partners for input
- Final template to be circulated to the Steering Committee.

DRAFT TEMPLATE AVAILABLE

Key aspect (in addition to MEDA categories) is an inventory of current educational capacity:

- General capacity, funding and infrastructure
- Evaluation of training activities
- National needs and capacity for meeting them
- Key national interventions – projects and costs

Appointment of National CB&T specialists to assist with the Training Plans.

- Draft TOR available for comment.
- Countries to advertise and, in conjunction with the PCU, appointment specialists.

In country monitoring programs:

- Details covered by Tommy, importance of noting and collaboration with existing programs emphasised.
- A Training Consultant (Draft ToR available) will be appointed to train personnel in data collection & maintenance of equipment, set up monitoring networks & data storage mechanisms, etc.
- Training ongoing as per country requirements

Regional Training Course 2008: University of Cape Town.

- Course structure was designed in conjunction with regional partners
- Nominees from the participating countries for the 2008 cruise were selected for participation.
- The course was undertaken between the 23rd June and the 16th July 2008.
- The course was a great success and feedback reports from MARE and the students are available on the ASCLME website

Regional Training course, 2009:

- Following a request from the Regional Meeting of ASCLME Technical Coordination Groups the course to be held in Cape Town
- A rough Draft Outline was prepared and circulated to the CB&T coordinators for comment.
- The amended Draft is currently being circulated to SWIOFP, WIOLAB, FAO and ReCoMaP for input
- Course Outline to be finalized by the end of March.
- Course is planned for middle June 2009.

Survey Data Analysis workshop – NanSis

- The workshop is likely to take place subsequent to the Regional Training Course at MARE.
- It is likely to be important for some of the scientists attending the MARE course to also participate in the NanSis training.
- This is being facilitated by the FAO EAF Nansen Project.
- ASCLME to assist as required

GIS and remote sensing:

- A one-week training course will be held in Reunion, immediately prior to the WIOMSA symposium, entitled: **Introduction to the basic principles of satellite imagery, image processing and GIS for habitat mapping, with reference to the geomorphology and biodiversity of the Western Indian Ocean.**
- This training course will be directly linked to the habitat mapping component of the ASCLME coastal study, and successful/keen trainees will have the opportunity to participate in field surveys later in 2009 and in 2010.

GIS and remote sensing continued...

- Collaboration with the SEMPA Project (of Mauritius and Rodrigues) as well as ReCoMaP has been discussed with regard to this course, and future GIS/RS training in the region.
- The TOR for the training course is to be prepared by the end of March, and forwarded to the Steering Committee for comment and selection of trainees.

Fish taxonomy and curation:

- A large number of fish specimens were collected during the 2008 Nansen cruises
- A 2-week training course is planned for mid-2009 for cruise participants and/or fish biologists/ecologists from participating countries.
- The course will be held at SAIAB in Grahamstown, South Africa, home of the largest fish collection in Africa.

SUMMARY

National CB&T activities for 2009:

BUILDING AN ECOSYSTEM APPROACH TO MANAGING AFRICAN MARINE RESOURCES

- **MEDA:** Appointment of national CB&T specialists
- **MEDA:** Collection of national CB&T information
- **MEDA:** National workshops to prepare Draft National Training Plans
- Initiate training for in country monitoring

SUMMARY

Regional CB&T activities for 2009:

- Undertake the regional training courses, and Cruises
- Discuss further training opportunities with regional partners, including DLIST and the ACEP ROV.